

BOARD OF SUPERVISORS

MADISON COUNTY, MISSISSIPPI

Department of Engineering
Tim Bryan, P.E., PTOE, County Engineer

3137 South Liberty Street, Canton, MS 39046
Office (601) 855-5582 FAX (601) 859-5857

MEMORANDUM

May 29, 2025

To: Casey Brannon, Supervisor, District I
Trey Baxter, Supervisor, District II
Gerald Steen, Supervisor, District III
Karl Banks, Supervisor, District IV
Paul Griffin, Supervisor, District V

From: Tim Bryan, P.E., PTOE
County Engineer

Re: Preliminary Plat
Southampton Garden Homes of Lake Caroline, Phase 2

The Engineering Department recommends approval of the preliminary plat for Southampton Garden Homes of Lake Caroline, Phase 2. It is 4 lots on 1.34 acres with no public infrastructure but some private infrastructure that is to be installed prior to final plat approval.

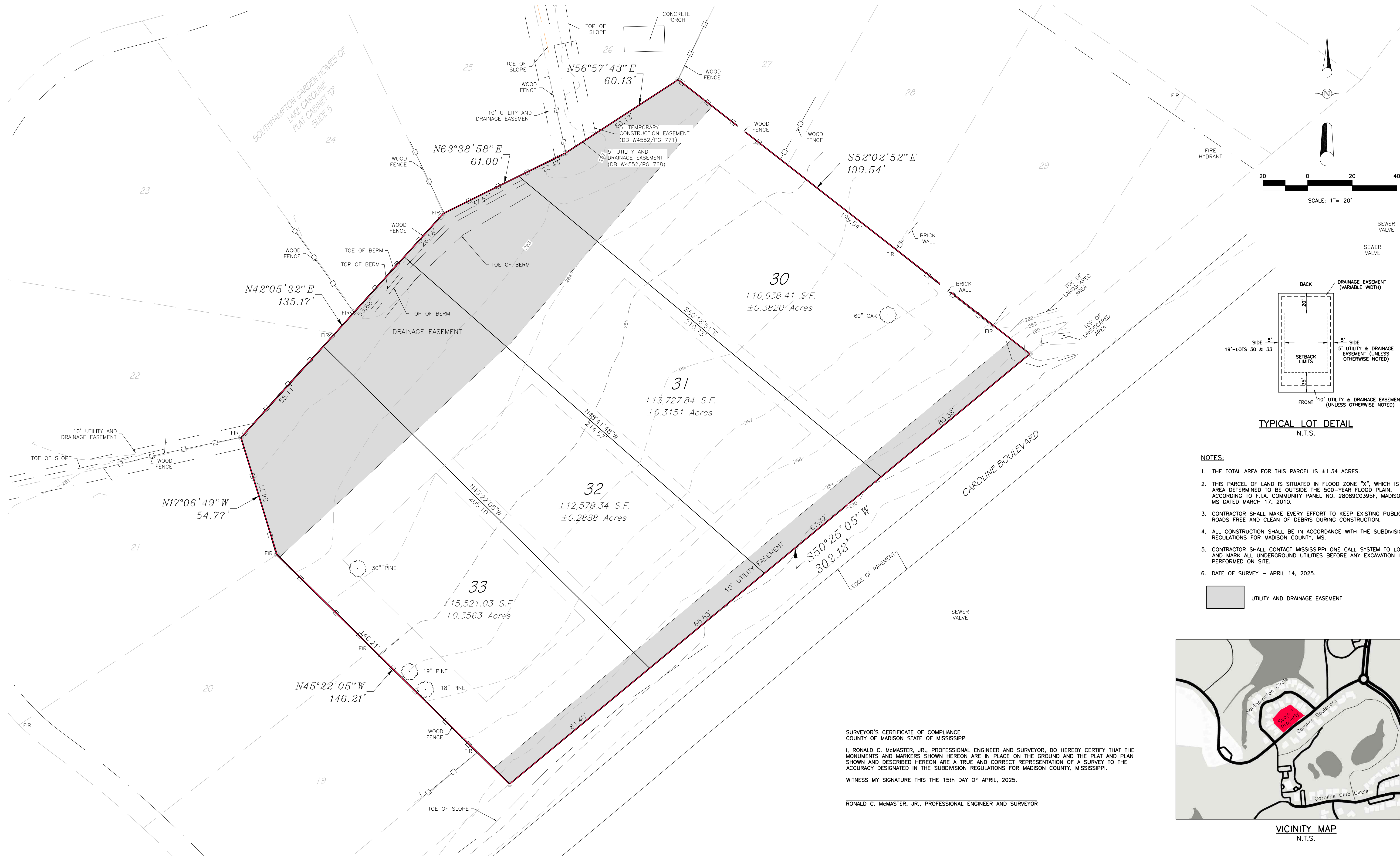
CASEY BRANNON
District One

TREY BAXTER
District Two

GERALD STEEN
District Three

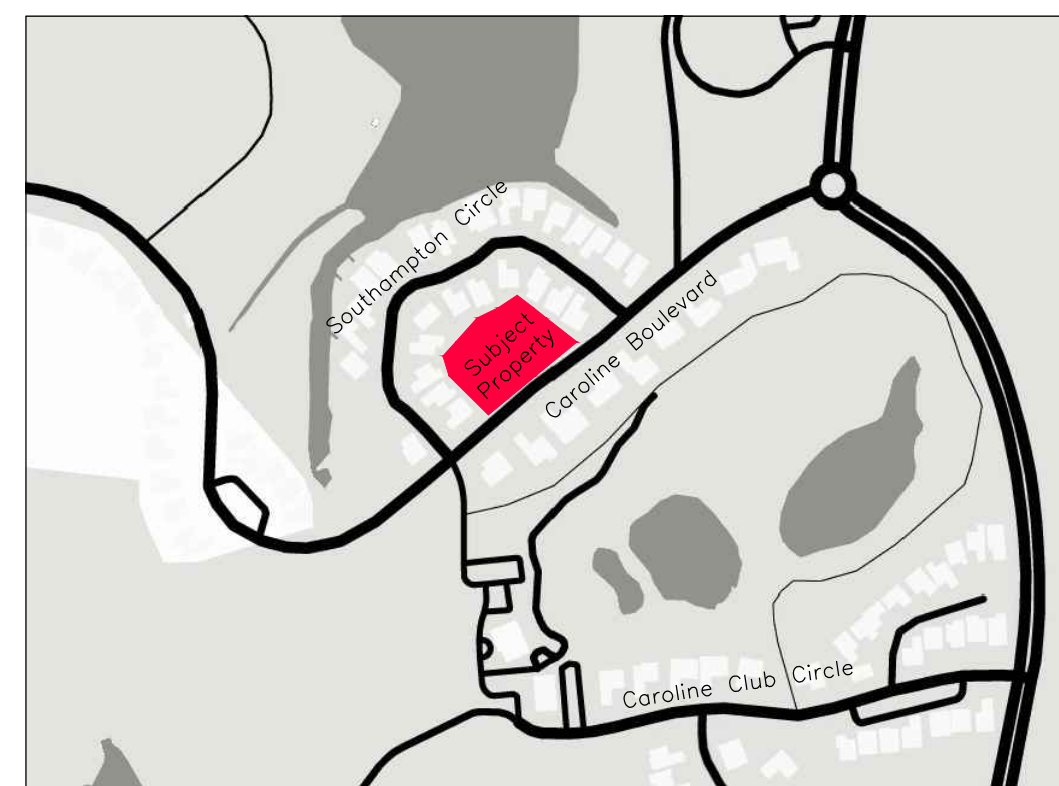
KARL M. BANKS
District Four

PAUL GRIFFIN
District Five



- NOTES:**
1. THE TOTAL AREA FOR THIS PARCEL IS ± 1.34 ACRES.
 2. THIS PARCEL OF LAND IS SITUATED IN FLOOD ZONE "X", WHICH IS AN AREA DETERMINED TO BE OUTSIDE THE 500-YEAR FLOOD PLAIN, ACCORDING TO F.I.A. COMMUNITY PANEL NO. 28089C0395F, MADISON CO. MS DATED MARCH 17, 2010.
 3. CONTRACTOR SHALL MAKE EVERY EFFORT TO KEEP EXISTING PUBLIC ROADS FREE AND CLEAN OF DEBRIS DURING CONSTRUCTION.
 4. ALL CONSTRUCTION SHALL BE IN ACCORDANCE WITH THE SUBDIVISION REGULATIONS FOR MADISON COUNTY, MS.
 5. CONTRACTOR SHALL CONTACT MISSISSIPPI ONE CALL SYSTEM TO LOCATE AND MARK ALL UNDERGROUND UTILITIES BEFORE ANY EXCAVATION IS PERFORMED ON SITE.
 6. DATE OF SURVEY - APRIL 14, 2025.

UTILITY AND DRAINAGE EASEMENT



VICINITY MAP
N.T.S.

SURVEYOR'S CERTIFICATE OF COMPLIANCE
COUNTY OF MADISON STATE OF MISSISSIPPI

I, RONALD C. McMASTER, JR., PROFESSIONAL ENGINEER AND SURVEYOR, DO HEREBY CERTIFY THAT THE MONUMENTS AND MARKERS SHOWN HEREON ARE IN PLACE ON THE GROUND AND THE PLAT AND PLAN SHOWN AND DESCRIBED HEREON ARE A TRUE AND CORRECT REPRESENTATION OF A SURVEY TO THE ACCURACY DESIGNATED IN THE SUBDIVISION REGULATIONS FOR MADISON COUNTY, MISSISSIPPI.

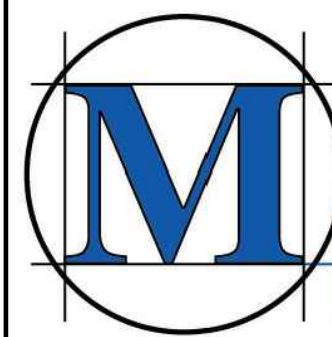
WITNESS MY SIGNATURE THIS THE 15th DAY OF APRIL, 2025.

RONALD C. McMASTER, JR., PROFESSIONAL ENGINEER AND SURVEYOR

Revisions				
#	Date	Nature	By	App'd

Project No.	M-3388	Designed By	R.C.M.
Date	04-15-25	Drawn By	B.B.
Scale	SEE ABOVE	Checked By	R.C.M.

**SOUTHAMPTON GARDEN HOMES
OF LAKE CAROLINE, PHASE 2**
MADISON COUNTY, MISSISSIPPI



McMASTER & ASSOCIATES, INC.
CIVIL ENGINEERS & LAND SURVEYORS

212 WATERFORD SQUARE
SUITE 300
MADISON, MS 39110
601.605.1090

**NOT FOR
CONSTRUCTION**

PRELIMINARY
PLAT

1